

**GPR75 Antibody (C-term)**  
**Affinity Purified Rabbit Polyclonal Antibody (Pab)**  
**Catalog # AP17211b**

**Specification**

---

**GPR75 Antibody (C-term) - Product Information**

Application	WB,E
Primary Accession	<a href="#">O95800</a>
Other Accession	<a href="#">NP_006785.1</a>
Reactivity	Human
Host	Rabbit
Clonality	Polyclonal
Isotype	Rabbit IgG
Calculated MW	59359
Antigen Region	396-425

**GPR75 Antibody (C-term) - Additional Information**

**Gene ID** 10936

**Other Names**

Probable G-protein coupled receptor 75, GPR75

**Target/Specificity**

This GPR75 antibody is generated from rabbits immunized with a KLH conjugated synthetic peptide between 396-425 amino acids from the C-terminal region of human GPR75.

**Dilution**

WB~~1:1000

E~~Use at an assay dependent concentration.

**Format**

Purified polyclonal antibody supplied in PBS with 0.09% (W/V) sodium azide. This antibody is purified through a protein A column, followed by peptide affinity purification.

**Storage**

Maintain refrigerated at 2-8°C for up to 2 weeks. For long term storage store at -20°C in small aliquots to prevent freeze-thaw cycles.

**Precautions**

GPR75 Antibody (C-term) is for research use only and not for use in diagnostic or therapeutic procedures.

**GPR75 Antibody (C-term) - Protein Information**

**Name** GPR75

**Function** G protein-coupled receptor that is activated by the chemokine CCL5/RANTES. Probably

coupled to heterotrimeric Gq proteins, it stimulates inositol trisphosphate production and calcium mobilization upon activation. Together with CCL5/RANTES, may play a role in neuron survival through activation of a downstream signaling pathway involving the PI3, Akt and MAP kinases. CCL5/RANTES may also regulate insulin secretion by pancreatic islet cells through activation of this receptor.

#### Cellular Location

Cell membrane; Multi-pass membrane protein

#### Tissue Location

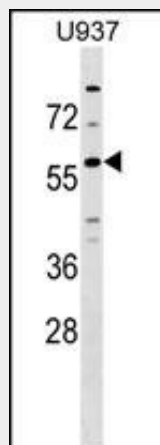
Expressed at high levels in brain and spinal cord and at detectable levels in retinal pigment epithelium. In situ hybridization of adult eye sections localized transcripts only to the perivascular cells, surrounding retinal arterioles, in the ganglion cell/nerve fiber layer. Also expressed by islet cells (at protein level).

### GPR75 Antibody (C-term) - Protocols

Provided below are standard protocols that you may find useful for product applications.

- [Western Blot](#)
- [Blocking Peptides](#)
- [Dot Blot](#)
- [Immunohistochemistry](#)
- [Immunofluorescence](#)
- [Immunoprecipitation](#)
- [Flow Cytometry](#)
- [Cell Culture](#)

### GPR75 Antibody (C-term) - Images



GPR75 Antibody (C-term) (Cat. #AP17211b) western blot analysis in U937 cell line lysates (35ug/lane). This demonstrates the GPR75 antibody detected the GPR75 protein (arrow).

### GPR75 Antibody (C-term) - Background

GPR75 is a member of the G protein-coupled receptor family. GPRs are cell surface receptors that activate guanine-nucleotide binding proteins upon the binding of a ligand.

### **GPR75 Antibody (C-term) - References**

Tarttelin, E.E., et al. Biochem. Biophys. Res. Commun. 260(1):174-180(1999)